

# ANNUAL REPORT

## 2016-17



Janmitram House  
Bade attarmuda, Near Indian School, Post Kelovihar  
Email id: [janmitram@gmail.com](mailto:janmitram@gmail.com), Visit us at: [www.janmitram.org](http://www.janmitram.org),  
Contact No:-9826144243, 7024142301-02-08

# *Message*

## President Desk

### **Foreword**

We, the friends of people have been working tirelessly for last ten years, to bring smile on the face of deprived and disadvantaged people, living in our vicinity. We do this by spurring inner strength, of people and communities, with motivation and the little support. We can now; proudly say that JanMitram is successful to realize its vision and mission, and became a true friend of people.

A lot is yet to be done. As a professional organization, we deliberately restricted ourselves to the issues and subjects, where we find our self efficient and qualified. We also restricted our self to certain geographical areas. The time has now come to spread the organization in new areas and pickup some issues that relate to our core concerns. In he next years, we will be doing the same. Especially with support of our supporting institutions, i.e. RISA and Ravi Cooperative.

This annual report presents details of our operations and achievements this year. All these take place successfully do to tireless efforts of my fellow volunteers and staff. I take this oppurtunity to thank them, and request to take it forward in forthcoming years.

Yours truly

***Manish Singh***

President

## Part 1: Programme review

### LIVELIHOOD ENHANCEMENT

Sustainable Livelihoods are core of Janmitram's philosophy. The way of earning livelihood should conserve and enhance natural balance in ecosystem. Three major programmes are ongoing in four blocks covering 85 villages that benefit over 5000 families. One is Watershed development programme sponsored by Government of India, Department of land resources. Second one is Wadi Development programme sponsored by NABARD. The third one is SHPI programme sponsored by NABARD for income generation and livelihood promotion of Self Help Groups in Dharmjaigarh

#### (1) Watershed Development program

Water and soil conservation are core of this programme, which are entailed by series of livelihood activities. The programme is a part of GOI- IWMP (Integrated watershed development programme) in which JanMitram is entrusted to treat 4600 Hectares of land spread over 20 villages of Kharsia Block. Over 2500 Families are getting benefitted with it.

#### Programme elements are chiefly:

- A. Soil and water Conservation activity:** Creation of Water harvesting structure i.e. pond, Farm Pond, Percolation tank, well digging etc. are those which help to increase ground water recharge and surface water availability for agriculture and other usage. Soil conservation activities are those which help to check soil erosion and stabilize fertile topsoil of land. Bund formation, Continuous contour trench and staggered contour trenches are main structure made in this programme.
- B. Livelihood and micro enterprise development:** SWC work improves quality of land and water availability for agriculture development. We ensure that utilization of enhanced resources is done by community in a sustainable manner. Improved farming with commercial view is subject of extension and capacity building we impart at regular intervals. Those who do not have substantial land resources, i.e. landless families are taken into micro enterprise development i.e. animal husbandry, business activity etc. Activities are done with ration al mix of loan and grant.
- C. Capacity building and training:** Since the programme is meant make community self sufficient, formation of village watershed committee, its training on managerial and technical aspect becomes most important for sustainability. Also, Formation of women self help groups, their federations and farmers interest groups are formed for participatory utilization of resources. They are also brought under trainings.

SMC Work Done in IWMP-IX , Block Kharsia				
Programme Component	Name of Structure/ Activity	Progress		
		Unit	Year 2013-14	Overall (Since 2011)
Entry Point Activities	Pipeline	Nos		
	Water tank	Nos		
	Manch	Nos	0	1
Soil Conservation	CCT	RM	1016	
	Farm Bund	Nos	21	31
Water Conservation	Pond & Percolation tank	Nos	03	08
Livelihood & ME Development	Formation of Groups	Nos	32	159
	SRI	Family	17	96
	Goat Rearing	Family	6	26
	Cow rearing	Family	6	9
	Fish Rearing	Groups	2	3
	Poultry	Family	6	14
	Vegi-Farming	Family	14	21

## **(2) Wadi Development Programme**

Wadi stands for “the courtyard” in local language. Concept of model wadi is a green courtyard which provides assured income and green environment. JanMitram Has successfully created 750 Wadis with prime support of NABARD. The greatest achievement is that the area chosen for wadis was earlier barren. Farmers grew nothing but minor millets in certain patch of these lands. It has now become valuable assets. We assisted farmers to plant it with High yielding fruit varieties as main crop; and

vegetables are grown as intercrop. One tribe gets one acre land developed under Wadi. This Programme is running since 2011, in 3 phases

- A) Phase 1- Planting year 2011 : 202 Wadis- Villages Baronkunda, Gharghodi, Sardhap, Bastipali, Tenda.
- B) Phase 2- Planting year 2013 : 266 Wadis in Puri, Pusalda, Kosamghat, Navadih Bansmuda, Navagarh
- C) Phase 3- Planting year 2014 : 261 Wadis in Porda, Rumkera, Bijari, Kathrapali, Patrapali

Mango, Cashew Guava and lime are distributed at no cost. Fertilizers, insecticide, pesticide in appropriate proportion were applied. Our farmers well responded to training and mobilization. They got their land fenced and took proper care to plants. We provided Water Source at every Wadi cluster – in form of Ringwell and Borewell, pumps, pipes etc. Joint effort of our team and farmer have done true miracle. We proudly say that our plant survival rate is above 95%. With development of land a water resource, intercropping has become popular.

WE provide Loans from TDF to strengthen WRD, Fence and to purchase inputs for intercrop. Of 65% of wadi areas are under continuous intercropping. And farmers are getting 25 to 90 thousand additional incomes from their land.

## **TRAINING AND SKILL DEVELOPMENT PROGRAMME**

**Capacity building is most important component of sustainable intervention. JanMitram imparts various training for benefit of its target group. Training can be divided into two types- Farm and Non far sector. We also impart training for community organizations to understand managerial aspect and improve financial literacy.**

### **1. Farm Sector Training**

- A. **Farmers School:** Under Scheme of ATMA (Sponsored by Dept. Of Agriculture and cooperation, Govt of India) a farmer’s school was convened at Baronakunda village. It was meant to train farmers in seed intensification of rice. Three month long training was attended by 32 farmers while one of them, Mr. Nakul Say Rathiya played the local resource person. Training ended with distribution of improved seed, Weeder and markers to all farmers. This training shows its impact when harvest of paddy was approximately twice of normal. Farmers learnt this technique and vowed to repeat it in forthcoming years.
- B. **SRI Training:** This was an in-house training conducted by the organization through its corpus. The time was same as farmers school at baronakunda, and was conducted in villages of Gharghodi, Sadrdap, Bastipali, and Tenda
- C. **Vegetable farming Training:** in all wadi villages, where vegetable intercropping is done between fruit plants, other farmers not having wadi also wanted to learn techniques. JanMitram organized vegetable farming training for self help group members and other farmers. Training concentrated especially on Rabi crop like potato, onion and chilly. Over 60 farmers got benefit of the training.
- D. **Organic Farming Training:** In order to Reduce utilization of chemical fertilizers in farming, we have promoted Vermi-compost, Biological control, IPM etc.

Agriculture extension officer participated in these programme and disseminated knowledge and know how

## 2. Nonfarm/ Skill development Training

- A. Basic electrical Mechanic Training:  
basic electrical training was organized at baramkela (Baramkela block). The batch has 10 trainees. Mr. Surendra sao and Ghanshyam bariha were master trainers. Training was organized under National skill development initiative, sponsored by District employment officer.
- B. Two wheeler mechanic training:  
Two wheeler training was organized at Sablapuri (Raigarh Block). This batch had 12 trainees. This Training was also organized under National skill development initiative, sponsored by District employment officer.

## 3. Community organization ( SHPI

- A. **Training of SHGs:** Training of SHGs is a continuous programme organized at regular intervals in village cluster.

These training focuses on integrated development of member and financial literacy, Group management, documentation, accounting and motivation are part of training curricula.

- B. **Training of federations:**

Federations are apex structures of SHGs that ensure participatory management

and decision making at village level. We take 5-15 SHGs in a federation, following the norms set by NRLM (National Rural Livelihood mission). These structures greatly help in our microfinance programme, run by RAVI –Cooperative, an organization promoted by JanMitram.

## Education

JanMitram, since inception has aspired to create a value based compassionate and impartial society. This can only be done through education of our fellow citizen. While we do it with grownups in our different programme, the need was felt to intervene in education sector.

A Small contribution was made in last few years with S.P.Singh memorial scholarship. The scholarship continued this year also now, organization has decided to open a school in gharghoda. A school subcommittee has been formed to look after its establishment and operations. The school site is chosen deliberately for a under developed town have a large mass of tribal population but no facilities of education, as per credibility and excellence.

JanMitram S P Singh Memorial School is decided to open at Baihumada village, 6 Km

from Gharghoda. The school shall have 3000+ students in next few years, along with all modern educational infrastructure and experienced faculties.

Meantime, School was opened in rented premise at gharghoda. Presently it has 432 students in school. Construction of Building Is going fast and organization is all set to stretch it up to class 8<sup>th</sup> in education session 2016-17. We are thankful to people of gharghoda who overwhelmingly responded to school and also to GIVE INDIA who collected sizable support through its website for opening of school.

## Health over view :- TARGETED INTERVENTION ON FEMALE SEX WORKERS

Since 2008, JanMitram is engaged in a highly challenging programme for Targeted Intervention of Female Sex workers, to reduce their risk of HIV-AIDs and STD infection. This project is running through prime support of NACO-National AIDS control organization, State Aids Control Society. Technical assistance is being provided by Hindustan lever family planning trust.

The organization has identified 1200+ female sex workers in two towns. Both town have seen high industrialization, mining and thereby emergence of migrant workers and truckers. Overt and covert Sex-workers have increased accordingly, posing great threat of HIV spread in lower middle-income groups. Out target is to prevent new HIV and Sexual transmitted infection among these FSWs and providing counseling, medicines, condoms etc. we are

trying to rehabilitate because many ladies as possibly belong to other professions too.

The promotion technique is adopted to transform their behavior from unsafe sex to safe sex situation. Proper strategies are developed through one to one meet, focused Group discussion, Condom promotion, condom demo/re-demo, proper counseling to change the behavior of the High risk group and the community. In STI Management Proper methodology is adopted to appoint communal Doctor/ Preferred Private Practitioners (PPP) as per the preferred community or FSW.

There are all facilities for free medicine and free treatment of the high-risked patient coming to their clinic. Government ICTC and referral centers are a part of STI management. Friendly atmosphere, proper counseling and personal relations are the key for success.

## Part 2: Financials

### Funding

JanMitram is getting support from various corners for its social and development related activities. We work with various government and non-government institutions. Individual support in form of donations is also a source. Consultancy and support to various schemes is another activity that adds to our financial resources.

Our major financial supporters are:

- **National bank for Agriculture and Rural Development**
- **C.G. State AIDS Control society**
- **DRDA / ZP Raigarh**
- **Give India Foundation**
- **Other Sources:** ICDS department, Other NGOs, individual donations, member's contribution, and membership fee etc. beneficiary contribution, Bank interest etc,

### Total Receipts (as per audit), Year wise

	Year	Receipt	Payment
1	2014-15	17485077	17485077
2	2015-16	20533967	20533967
3	2016-17	28302613	28302613

Though, JanMitram is allowed to get foreign contributions under FCRA by MHA-GOI, its funding sources are indigenous. Donations to organization are exempted for tax U/S 12-A and 80-G of income tax Act. **Annual Reports and Audited Statements are freely available to any member of the public and disclosed on its website [www.janmitram.in](http://www.janmitram.in)**

**Note: Audit Report of the year is part of annexure.**

List of Institutional Donor (Major Donations/Grant-in-Aid: FY 2016-17 )		
Name	Purpose	Amount
DRDA -Raigarh	Watershed	2399421
NABARD-Raipur	WADI-Phase I	484500
NABARD-Raipur	Wadi-Phase II	2295100
DRDA -Raigarh	CFT Project	1404000
NABARD-Raipur	Wadi FOP Project	274500
NABARD-Raipur	SHPI Programme	458000
ICDS-Raigarh	PWDVA Programme	232000
CG-SACS	TI on FSWs	2512020
Give India Foundation	Livelihood Support	1022937
Give Foundation (Foreign fund)	Livelihood Support	65963

List of Individual Donors (Donated above 1,00,000 in FY 2016-17 )		
Name (Shri..)	PAN No.	Amount
Surajbhan Yadav	AGUPY07365J	42000

### Resend Board Members

Sl. No.	Name	Father/Spouse	Address	Status
1	Mr. Manish Singh	Lt. Sh. S.P. Singh	MIG II /33 Din Dayal Purm Raigarh	PRESIDENT
2	Mr. Ramakant Padhee	Sh. Narsingh Padhee	Din Dayal Puram Raigarh	VICE-PRESIDENT
3	Dr.M.G. Goswami	Sh.K.G.Goswami	"Goswami Bhavan" Inside Sunday market, Raigarh ( C.G)	SECRETARY
4	Mr. Jiva Bhagat	Mr. Tikeswar Bhagat	Village – Kamtara ,Gharghoda ,Dist:- Raigarh(CG)	JOINT SECRETARY
5	Mr. Ravikant Meena	Sh. J.P. Meena	Vill- Balluwas, Teh- Thanagazi Distt, Alwar ( Raj.)	TREASURER
6	Smt. Kusum Sahu	Sh. Gyanendra Sahu	Vill- Aurda The-Pussor Dist Raigarh	MEMBER OF EX. COUNCIL
7	Mr.Kripal Sidar	Sh. Mohan Lal Sidar	Vill- Bhalmudi Block Dharamjaygarh Dist. Raigarh (C.G.)	MEMBER OF EX. COUNCIL

- Tenure of Board is 3 years, Presently 05.10.2015 to 04.10.2018
- None of Board members are related with blood or marriage.
- No remuneration, sitting fees or any other form of compensation is paid to board members for this capacity.

Mandatory Board meeting in 2016-17		
Type of Meeting	Prescribed frequency	Meetings held in yr
Managing Board Meeting	Minimum one in Two month	5
Sadharan Sabha (General Body)	Annual	1
Idea Lab	Joint Meetings of Senior Staff and Board , Monthly or - as and when required	12

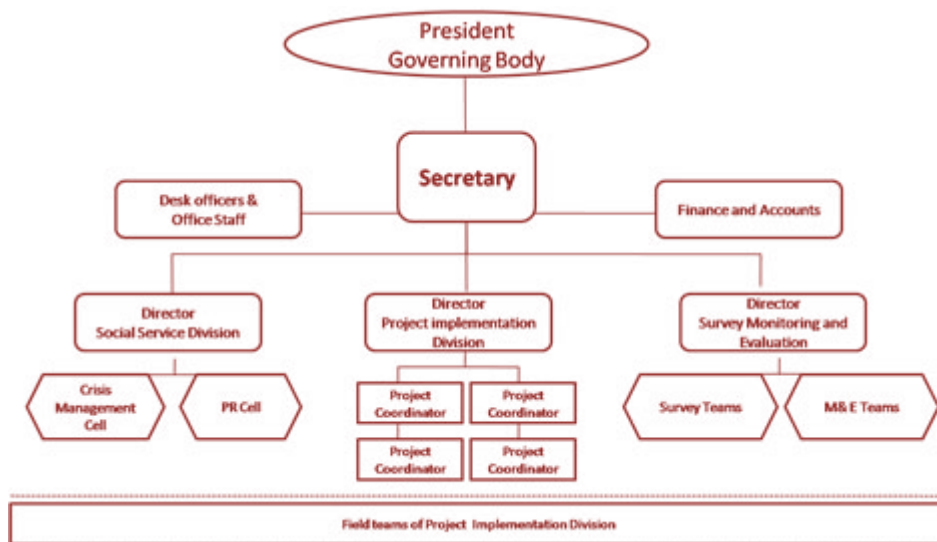
### Internal audit and Financial Management

The internal audit team is made up of two persons, who work independently, though in close coordination with Programme managers, treasurer and secretary.

They visit projects/units regularly and submit monthly reports to Treasurer. In the case of serious mistakes the president sends out instructions to concerned persons, otherwise the project heads takes remedial actions on the basis of the findings of internal auditors.

All bank accounts of organization follow joint signatory method.

### Orgnaogram





### COMPENSATION STRUCTURE

Slab of gross salary (in Rs) plus benefits paid to staff (per month)	Male staff	Female staff	Total staff
Less than 5000	1	12	13
5,000 - 10,000	13	15	28
10,000 - 25,000	16	8	24
25,000 - 50,000	1	1	2
50,000 - 1,00,000	-	-	-
Greater than 1,00,000	-	-	-

### Staff Remuneration [Gross yearly + benefits] in Rupees in 2016-2017

	Name	Designation	Remuneration (in Rs.)
Operational Head of the organization: (including honorarium):	Ramakanta Padhee	Executive Director	460000
Highest paid person in the organisation (staff or consultant):	Ramakanta Padhee*	Executive Director	460000
Lowest paid person in the organisation (staff or consultant):	Holika Chouhan	Office Staff	42000

### Amount Reimbursed (in Rs.) to ALL Board members in the financial year 2016-17 for the following items:

**Please note:** 'Reimbursement' means: actual/estimated expenses like conveyance, communication, travel, etc. related to the role being discharged, i.e., for a Board member, reimbursement of a car & driver's salary throughout the year is classified as remuneration and not as reimbursement.

1	International Travel	Rs. 0
2	Domestic Travel	Rs.0
3	Local Conveyance	Rs.140170
4	Entertainment Expenses	Rs. 0
5	Others	Rs. 0

#### Transparency Disclosures

- Remuneration, sitting fees and other forms of compensation is paid to few board members for this capacity.
- Total cost of National travel for organizational purpose incurred by JanMitram Staff is Rs 140170 (One Lakh Forty Thousand One Hundred Seventy) this year.
- No international travel has been made or booked in accounts this year.

**AGRAWAL DINESH & CO.**  
**CHARTERED ACCOUNTANTS**

30-31, 1st Floor  
Krishna Crown, Chaitanya Nagar,  
Dhimrapur Road, Raigarh (C.G.)  
PH. (07762) 234401/02

**AUDITOR'S REPORT**

To,  
The Managing Committee  
Janmitram Kalyan Samiti  
At. P.O- Raigarh,  
Distt. Raigarh (C.G.)

We have examined the attached Statement of Affairs of **Janmitram Kalyan Samiti**, Distt - Raigarh as at 31st March 2017 the Income & Expenditure and Receipts & Payments Account for the year ended on 31 March 2017 annexed there to and report that:

- 1 We have obtained all information and explanation which to the best of our knowledge and belief were necessary for the purpose of our audit.
- 2 (i) These Financial statements are the responsibilities of the Samiti Management. Our responsibilities is to express an opinion on these financial statements based on our audit.  
(ii) We conducted our audit in accordance with auditing standards generally accepted in India. Those standards required that we plan & Perform for the audit to obtain reasonable assurance about whether the financial statements are free of material misstatement. an audit includes examining on test basis. Evidence supporting the amounts and disclosures in the financial statements . An audit includes assessing the principles used and significant estimates made by the management as well as evaluating the over all financial statement presentation . We believe that our audit provides reasonable basis of our opinion .
- 3 In our opinion proper books of accounts, as required by law have been kept by the samiti so far as appears from our examination of the books .
- 4 The Receipts & Payments account dealt with by these report are in agreement with the books of accounts.

In our opinion and to the best of our information and according to the explanation given to us , the said accounts together with the notes thereon , with the information required in the manner so required and give a true and fair view.

- i. In the case of statements of affairs ,of the state of affairs of the samiti as at 31st march 2017.
- ii. In the case of Income and Expenditure Account, of the Deficit of the Samiti for the year ended on that date.

Place: Raigarh.  
Date: 07/10/2017

For, Agrawal Dinesh & Co.  
Chartered Accountants

(D.K. Agrawal)  
Partner  
M.No. 076969





**JANMITRAM KALYAN SAMITI**

At./P.O.-RAIGARH, DISTT.-RAIGARH

**BALANCE SHEET**

**AS ON 31ST MARCH 2017**

LIABILITIES		AMOUNT	ASSETS	AMOUNT
<u>Income &amp; Expenditure A/c</u>			<u>Fixed Assets</u>	
<u>Opening Balance</u>			Building Training Centre	4402612.00
JSPS School	10,92,727.67		JSPS School Fixed Assets	12745087.00
Janmitram Kalyan Samiti	45,12,083.41		TI Project	29371.00
TI Project	33,604.50			17177070.00
Foreign Contribution Ac	13,018.34		<u>Loan &amp; Advances</u>	
Watershed IWMP-9	33,33,136.23		NABARD TDF Loan Support Fund	1740000.00
CFT Project	1,898.00		Less : Received	-740000.00
WADI Phase I	95,044.50		Programme Officer (WADI Phase II)	1417.00
WADI Phase II	(40,032.00)		Tds Receivable	1022.00
Add: Excess of Exp over			<u>Closing Balance</u>	
Income Transfer from Income &			<u>Bank Balance</u>	
Exp. A/c	6,76,448.98	8365031.67	Bank Of Baroda , Raigarh (JKS)	496201.25
			CGGB , Lailunga (JKS)	8613.00
<u>Loan &amp; Advances</u>			SBI Gharghoda (JKS)	79445.30
NABARD Raipur	1740000.00		Ravi Co- Operative-1865 (JKS)	78734.00
Less : Payment	-740000.00		NABARD BOND (3 Nos.) (JKS)	24750.00
Ravi Cooperative	6409858.0		JSPS School FDR (JKS)	10000.00
Bank OF india	3258285.51		Union Bank Of India (TI Project)	80443.5
Programme Manager	3930.00	10672073.51	Union Bank Of India (WADI Phase II)	5198
<u>Unsecure Loan</u>			Union Bank Of India (WADI Phase I)	3045.5
<u>Audit Fee Payable</u>			Bank Of Baroda (IWMP-9)	54116.23
WADI Phase II	6000.00		Union Bank Of India (CFT Project)	1409
WADI Phase I	5000.00		Foreign Contribution Ac	4425.46
CFT Project	6000.00		ICICI Bank (JSPS Memorial School)	31072.5
JSPS Memorial School	5000.00		FDR (JSPS Memorial School)	15000
FC A/c	2300.00		<u>Cash In Hand</u>	
Janmitram Kalyan Samiti	23800.00	48100.00	Janmitram Kalyan Samiti	10831.44
			TI Project	11
			WADI Phase II	170
			WADI Phase I	0
			Watershed IWMP-9	500
			CFT Project	0
			JSPS Memorial School	1730
			Foreign Contribution Ac	0
				9,05,696.18
<b>TOTAL</b>		<b>19085205.18</b>	<b>TOTAL</b>	<b>19085205.18</b>

Accounting Policies and notes to the Accounts

- 1 Accrual system of Accounting has been followed by the samiti.
- 2 Separate set of books of Accounts has been maintained for the CFT Project, Watershed, IWMP-9 Singhanpur, , AIDS TI, NABARD Wadi I & II, JSPS School, FC Account programme.
- 3 Works done by the Samiti on various project are subject to our physical verification.
- 4 Cash balance stated in the financial statements are subject to our Physical Verification.

Place : Raigarh  
Date: 07/10/2017

For, Janmitram Kalyan Samiti  
Raigarh

(President)

**President**  
Janmitram Kalyan Samiti  
Raigarh (C.G.)

In Terms of our Annexed Report of Even Date

For, Agrawal Dinesh & Co.  
Chartered Accountants

(D.K. Agrawal)

Partner  
Mem. No 076969



As per Schedule "L"

Programme Exp.

TI Project	93487.00	
WADI Phase II	1899446.00	
WADI Phase I	447900.00	
Watershed IWMP-9	5369000.00	
CFT Project	359220.00	
Foreign Contribution Ac	61250.00	
SHPI Programme	200290.00	
Nabard Wadi FPO Exp.	209500.00	
PWDVA Programme	148113.00	
Give India Exp.	212100.00	
Organic Farming	203657.00	9203963.00

As per Schedule "M"

Audit Fees

WADI Phase II	6000.00	
WADI Phase I	5000.00	
Watershed IWMP-9	68000.00	
CFT Project	6000.00	
JSPS Memorial School	5000.00	
Foreign Contribution Ac	3300.00	
Janmitram Kalyan Samiti	13800.00	107100.00

As per Schedule "N"

Cash & Bank Balance Opening Balance

Bank Of Baroda , Raigarh (JKS)	20464.62	
CGGB , Lailunga (JKS)	8197.00	
SBI Gharghoda (JKS)	307659.35	
Ravi Co- Operative (JKS)	5163.00	
Ravi Co- Operative-1865 (JKS)	28963.00	
JSPS School FDR (JKS)	10000.00	
NABARD BOND (3 Nos.) (JKS)	24750.00	
Union Bank Of India (TI Project)	303.50	
Union Bank Of India (WADI Phase II)	7993.00	
Union Bank Of India (WADI Phase I)	91571.50	
Bank Of Baroda (IWMP-9)	3332636.23	
Union Bank Of India (CFT Project)	1898.00	
CGB(FC A/c)	13018.34	
ICICI Bank (JSPS Memorial School)	3590.00	
FDR (JSPS Memorial School)	15000.00	

Cash In Hand

TI Project	733.00	
WADI Phase II	1000.00	
WADI Phase I	140.00	
Watershed IWMP-9	500.00	
CFT Project	0.00	
JSPS Memorial School	46397.00	
Foreign Contribution Ac	0.00	
Janmitram Kalyan Samiti	7224.44	3927201.98





**As per Schedule "G"**

**Salaries Exp.**

TI Project	1853844	
WADI Phase II	374294	
WADI Phase I	115000	
Watershed IWMP-9	70000	
CFT Project	860797	
JSPS Memorial School	3110522	
Foreign Contribution Ac	7530	
Janmitram Kalyan Samiti	231743.00	6623730

**As per Schedule "H"**

**Vehicle Rent & Office Rent**

TI Project	48000.00	
Watershed IWMP-9	100000.00	
CFT Project	63000.00	
JSPS Memorial School	3066100.00	3277100.00

**As per Schedule "I"**

**Travelling Exp.**

TI Project	155490.00	
CFT Project	16065.00	
WADI Phase II	70196.00	
Watershed IWMP-9	81852.00	
Janmitram Kalyan Samiti	140170.00	463773.00

**As per Schedule "J"**

**Interest Paid**

WADI Phase II	6588.00	
WADI Phase I	1172.00	
JSPS Memorial School	400025.00	
Janmitram Kalyan Samiti	92733.00	500518.00

**As per Schedule "K"**

**Other Exp.**

TI Project	75449.00	
WADI Phase II	9602.00	
WADI Phase I	14916.00	
Watershed IWMP-9	41474.00	
CFT Project	52350.00	
JSPS Memorial School	760999.00	
Foreign Contribution Ac	5517.00	
Janmitram Kalyan Samiti	268125.00	1228432.00



**As per Schedule "C"**Grant In Aid

CG State Aids Control Society	2512020.00	
DRDA MGNREGA,Raigarh	1404000.00	
WADI TDF Phase II	2295100.00	
WADI TDF Phase I	484500.00	
DRDA Watershed	2399421.00	
NABARD WADI FPO Project	274500.00	
NABARD SHPI Dharamjagarh	458000.00	
ICDS PWDVA Programe	232000.00	10059541.00

**As per Schedule "D"**Contirbution & donation

Membership Fees	6600.00	
Fee For Training & Technical Services	357826.00	
Give India Foundation	1022936.63	
Give India FC Fund	65963.12	
Community Donation	42000.00	1495325.75

**As per Schedule "E"**Bank Interest Received

Janmitram Kalyan Samiti	18639.00	
UBI (TI Project)	3828.00	
UBI (WADI Phase II)	7832.00	
UBI (WADI Phase I)	2724.00	
Bank Of Baroda (IWMP9)	52385.00	
UBI (CFT Project)	1134.00	
CGB(FC A/c)	1061.00	
ICICI Bank (JSPS School)	5157.00	92760.00

**As per Schedule "F"**Bank Charges

Janmitram Kalyan Samiti	10826.05	
UBI (TI Project)	190.00	
UBI (WADI Phase II)	120.00	
UBI (WADI Phase I)	235.00	
UBI (CFT Project)	60.00	
CGB(FC A/c)	320.00	
ICICI Bank (JSPS School)	1714.68	13465.73





**JANMITRAM KALYAN SAMITI**  
At./P.O.-RAIGARH, DISTT.-RAIGARH  
FOR THE PERIOD FROM 1ST APRIL 2016 TO 31ST MARCH 2017

Schedules to Receipt & Payments

As per Schedule "A"

Opening Balance

JSPS School	10,92,727.67	
Janmitram Kalyan Samiti	45,12,083.41	
TI Project	33,604.50	
Foreign Contribution Ac	13,018.34	
Watershed IWMP-9	33,33,136.23	
CFT Project	1,898.00	
WADI Phase I	95,044.50	
WADI Phase II	(40,032.00)	90,41,480.65

As per Schedule "B"

Closing Balance

Bank Of Baroda , Raigarh (JKS)	496201.25	
CGGB , Lailunga (JKS)	8613.00	
SBI Gharghoda (JKS)	79445.30	
Ravi Co- Operative-1865 (JKS)	78734.00	
NABARD BOND (3 Nos.) (JKS)	24750.00	
JSPS School FDR (JKS)	10000.00	
Union Bank Of India (TI Project)	80443.5	
Union Bank Of India (WADI Phase II)	5198	
Union Bank Of India (WADI Phase I)	3045.5	
Bank Of Baroda (IWMP-9)	54116.23	
Union Bank Of India (CFT Project)	1409	
Foreign Contribution Ac	4425.46	
ICICI Bank (JSPS Memorial School)	31072.5	
FDR (JSPS Memorial School)	15000	
<u>Cash In Hand</u>		
Janmitram Kalyan Samiti	10831.44	
TI Project	11	
WADI Phase II	170	
WADI Phase I	0	
Watershed IWMP-9	500	
CFT Project	0	
JSPS Memorial School	1730	
Foreign Contribution Ac	0	905696.18



**JANMITRAM KALYAN SAMITI**

At./P.O.-RAIGARH, DISTT.-RAIGARH  
RECEIPTS & PAYMENTS ACCOUNT

FOR THE PERIOD FROM 1ST APRIL 2016 TO 31ST MARCH 2017

RECEIPTS	AMOUNT	PAYMENTS	AMOUNT
To Cash & Bank Balance (As per Schedule "N")	3927201.98	By SP Singh Memorial Scholarship	80,000.00
To Grant In Aid (As per Schedule "C")	10059541.00	By Bank Charges (As per Schedule "F")	13465.73
To Fees Received Janmitram SPS Memorial School	10446049.00	By Salaries Exp. (As per Schedule "G")	6623730
To Contribution & donation (As per Schedule "D")	1495325.75	By Vehicle Rent & Office Rent (As per Schedule "H")	3277100.00
To TDF Loan Service Charges	92733.00	By Travelling Exp. (As per Schedule "I")	463773.00
To Bank Interest Received (As per Schedule "E")	92760.00	By Interest Paid (As per Schedule "J")	500518.00
To Other Income		By Other Exp. (As per Schedule "K")	1228432.00
TI Project	7975.00		
NAWARD Financial Services	19416.00	By Programme Exp. (As per Schedule "L")	9203963.00
To Loan & Advances Received			
TI Project	94000.00	By Professional Consultancy Fees TI Project	211075.00
Wadi TDF Phase II	122000.00		
TDF Loan Support Fund 2 Ravi Cooperative	700000.00 114500.00	By Advertisement Exp. TI Project	5000.00
TDF Loan Support Fund 1	40000.00	JSPS Memorial School	26080.00
CFT Project	0.00	Janmitram Kalyan Samiti	26500.00
Advance From PM	3930.00		57580.00
To District Education Officer (RTE)	53550.00	By Repair & Maintenance TI Project	5800.00
To V. Padmavati for School Camp	280000.00	JSPS Memorial School	805302.00
To Advance Refund	20000.00		
To Wadi I Programme Officer	214923.00	By Audit Fees WADI Phase II	0.00
To Wadi II Programme Officer	518708.00	WADI Phase I	0.00
		Watershed IWMP-9	68000.00
		CFT Project	0.00
		JSPS Memorial School	5000.00
		Foreign Contribution Ac	1000.00
		Janmitram Kalyan Samiti	13800.00
			87800.00
		By Loan & Advance Paid TI Project	84000.00
		Janmitram Wadi TDF Phase 2	122000.00
		Ravi Cooperative	463650.00
		TDF Loan Support Fund 1	40000.00
		TDF Loan Support Fund 2	700000.00
		CFT Project	0.00
			14,09,650.00
		By Fixed Assets Purchased	16,05,325.00
		By Repayment of Loan Ravi Cooperative	990000.00
		Bank Of India	102662.82
			10,92,662.82
		By Cash & Bank Balance Closing Balance (As per Schedule "0")	905696.18
		By Wadi I Programme Officer	2,11,590.00
		By Wadi II Programme Officer	5,19,150.00
	28302612.73	Total	28302612.73

Place : Raigarh  
Date: 07/10/2017

For, Janmitram Kalyan Samiti  
Raigarh  
(President)

**President**  
Janmitram Kalyan Samiti  
Raigarh (C.G.)

In terms of our annexed report of even date

For, Agrawal Dinesh & Co.  
Chartered Accountants  
(D.K. Agrawal)  
Partner  
Mem. No 076969






**JANMITRAM KALYAN SAMITI**  
At./P.O.-RAIGARH, DISTT.-RAIGARH  
**INCOME & EXPENDITURE ACCOUNT**  
FOR THE PERIOD FROM 1ST APRIL 2016 TO 31ST MARCH 2017

EXPENDITURE	AMOUNT	INCOME	AMOUNT
To SP Singh Memorial Scholarship	80000.00	By Grant In Aid (As per Schedule "C")	10059541.00
To Bank Charges (As per Schedule "F")	13465.73	By Fees Received Janmitram SPS School	10446049.00
To Salaries Exp. (As per Schedule "G")	6623730	By Contribution & donation (As per Schedule "D")	1495325.75
To Vehicle Rent & Office Rent (As per Schedule "H")	3277100.00	By TDF Loan Service Charges	92733.00
To Travelling Exp. (As per Schedule "I")	463773.00	By Bank Interest Received (As per Schedule "E")	92760.00
To Interest Paid (As per Schedule "J")	500518.00	By Other Income TI Project	7975.00
		Nabard Finacial Services	20438.00
To Other Exp. (As per Schedule "K")	1228432.00	By District eduction Officer(RTE)	53550.00
To Programme Exp. (As per Schedule "L")	9203963.00	By Excess Of Exp. Over Income Transferred to Balnace Sheet	676448.98
To Professional Consultancy Fees TI Project	211075.00		
To Advertisement Exp. TI Project	5000.00		
JSPS Memorial School	26080.00		
Janmitram Kalyan Samiti	26500.00		
	57580.00		
To Repair & Maintenance TI Project	5800.00		
JSPS Memorial School	805302.00		
	811102.00		
To Audit Fees (As per Schedule "M")	107100.00		
To Depreciation TI Project	13197.00		
JSPS Memorial School	353785.00		
	366982.00		
<b>TOTAL</b>	<b>22944820.73</b>		<b>22944820.73</b>

Place: Raigarh.  
Date: 07/10/2017

For, Janmitram Kalyan Samiti  
Raigarh  
(President)

  
**President**  
Janmitram Kalyan Samiti  
Raigarh (C.G.)

For, Agrawal Dinesh & Co.  
Chartered Accountants  
(D.K. Agrawal)  
Partner  
Mem. No 076969



As per Schedule "0"

Cash & Bank Balance Closing Balance

Bank Of Baroda , Raigarh (JKS)	496201.25	
CGGB , Lailunga (JKS)	8613.00	
SBI Gharghoda (JKS)	79445.30	
Ravi Co- Operative-1865 (JKS)	78734.00	
NABARD BOND (3 Nos.) (JKS)	24750.00	
JSPS School FDR (JKS)	10000.00	
Union Bank Of India (TI Project)	80443.5	
Union Bank Of India (WADI Phase II)	5198	
Union Bank Of India (WADI Phase I)	3045.5	
Bank Of Baroda (IWMP-9)	54116.23	
Union Bank Of India (CFT Project)	1409	
Foreign Contribution Ac	4425.46	
ICICI Bank (JSPS Memorial School)	31072.5	
FDR (JSPS Memorial School)	15000	
<u>Cash In Hand</u>		
Janmitram Kalyan Samiti	10831.44	
TI Project	11	
WADI Phase II	170	
WADI Phase I	0	
Watershed IWMP-9	500	
CFT Project	0	
JSPS Memorial School	1730	
Foreign Contribution Ac	0	905696.18

In terms of our annexed report of even date

Place : Raigarh  
Date: 07/10/2017

For, Janmitram Kalyan Samiti  
At/ Po-Raigarh, Distt. Raigarh

(President)

For, Agrawal Dinesh & Co.  
Chartered Accountants

(D.K. Agrawal)  
Partner

Mem. No 076969

